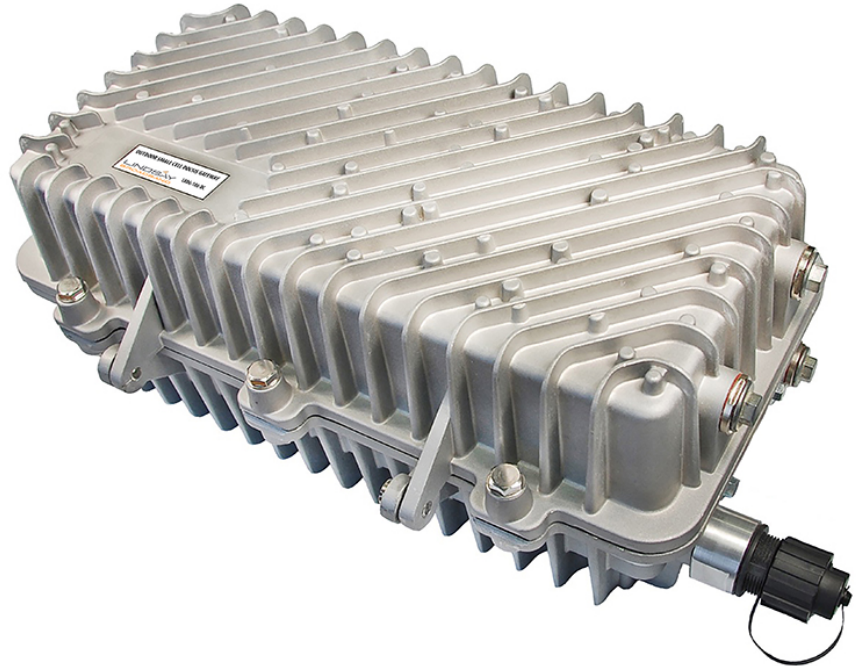


LINDSAY BROADBAND OUTDOOR SMALL CELL DOCSIS® GATEWAY

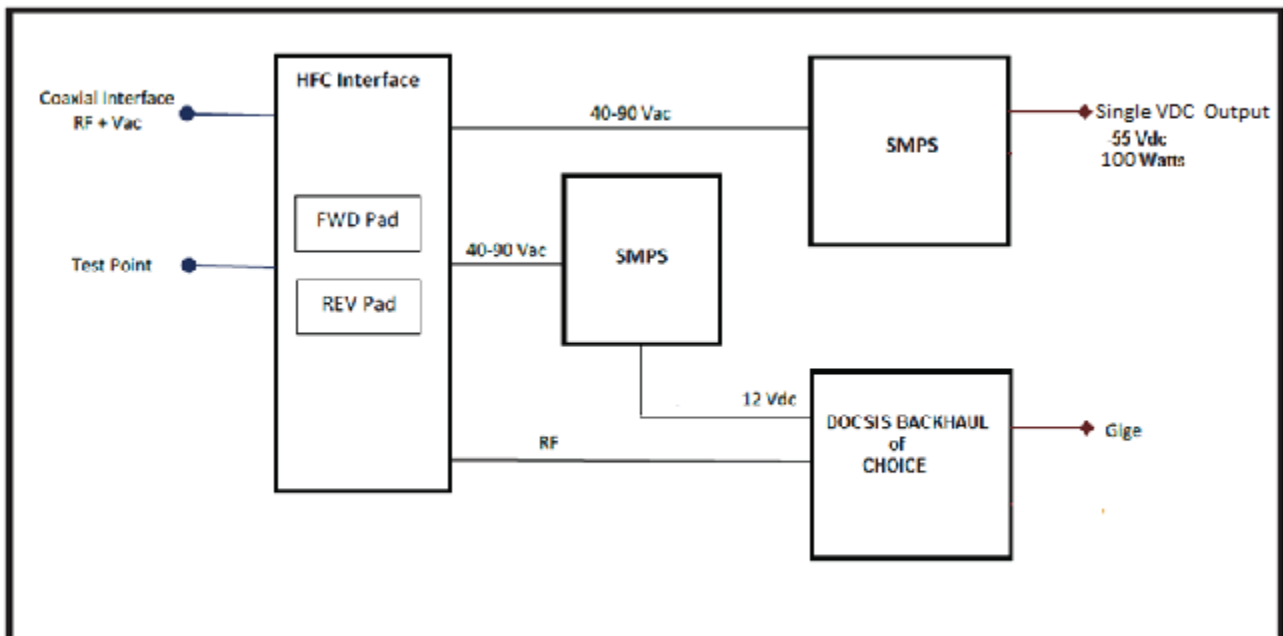
LBDG-100-DC

FEATURES

- Die cast aluminum housing (clam shell)
- Mounting configurations: wall, vault, or strand
- Dual gaskets provide 15-PSI weather proof seal
- Operating range, from -40°C to +60°C (-40°F to +140°F)
- Designed to protect against surges ANSI-IEEE C62.41 Category B3 6 KV
- DOCSIS® 3.0 compliant, DOCSIS® 3.1 optional
- Cable plant-powered (40-90 voltage AC)
- 6Kv Surge protection
- HFC access with directional coupler or power-passing tap
- Coax power interface provides for easy set up
Monitor and configure via SNMP agent



BLOCK DIAGRAM



DOCSIS® SPECIFICATIONS

Lindsay LBDG-100-DC Gateway with DC Power Supply Specifications		
Cable Modem		
Band Plans	DOCSIS® 3.1	
Network Configuration and Management	TFTP, SNMP (V1, V2c, V3), Telnet, HTTP	
Input Impedance	75 Ω	
Privacy	BPI+	
Downstream Modulation	Up to 32 SCQAM or 2 OFDM	
RF Input Sensitivity (1)	Modem F Port	+15 to -15dBmV
	Housing 5/8" Port	+20 to -10dBmV
Upstream Modulation	Up to 8 SCQAM or 2 OFDMA	
Maximum Upstream Data Rate	Over 1 Gbps	
Max. Transmit Power	Modem F Port	+65dBmV for OFDMA +57dBmV for 16 QAM – 4-8 upstreams
	Housing 5/8" Port	+61dBmV for OFDMA +53dBmV for 16 QAM – 4-8 upstreams
HFC		
Return Loss		-16dB (Min.) With 75Ω Termination
		-10dB (Min.) With Terminated By Modem
Insertion Loss ⁽¹⁾		Downstream: -5dB (± 1dB)
		Upstream: -4dB (± 1dB)
Test Point		-20dB Relative to Cable Modem RF Port
Pad Type		JPX, Separate Forward and Reverse
Temperature Range		-40 to +60°C (-40°F to +140°F)
EMI Isolation		100dB (5 to 1000MHz)
Surge Withstand (HFC)		ANSI-IEEE C62.41 Category B3 (6KV) (Gas Tube or Solid-State Crowbar)
Input Powering		40 to 90V _{AC} (Pseudo Sine)
Max. Power Consumption (100W Load)		3.1 Amps @ 60V _{AC} 2.2 Amps @ 90V _{AC}
Output Power		
Output Power		100W (Fully Isolated)
Output Voltage		-55.8V _{DC} (± 2%)
Efficiency		89%
Power Factor		0.8
Ethernet		
Throughput		10/100/1000Mbps
Reach		100 meters
Interface		RJ45
Physical		
Dimensions		406 x 228 x 165mm (16 x 9 x 6.5")
Weight		6.9 Kg (15.3 Lbs)
Ingress Protection		IP68 (15 PSI for 10 Seconds)

Notes:

- (1) Levels reported by modem management interfaces reference the modem F port.
Levels at the Gateway KS port incorporate the internal -5dB/-4dB loss of the HFC Interface.

*All specifications are subject to change without prior notice

Copyright © 2017 Lindsay Broadband Inc.

FOR MORE INFORMATION ON OUR WIRELESS, OPTICAL AND RF PRODUCTS
CALL 1-800-465-7046 OR
U.S. Sales Toll free: 877-672-4340

www.lindsaybroadbandinc.com